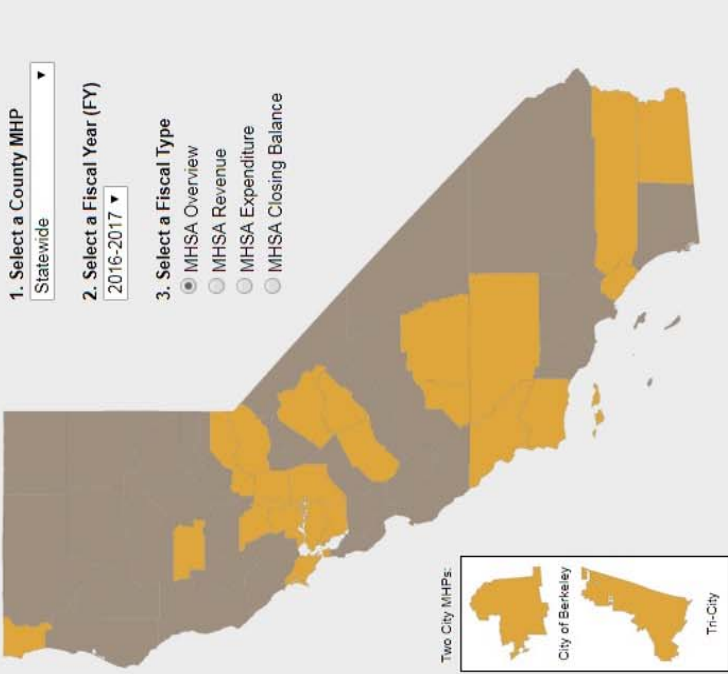


1. Select a County MHP  
Statewide
2. Select a Fiscal Year (FY)  
2016-2017
3. Select a Fiscal Type
  - MHSA Overview
  - MHSA Revenue
  - MHSA Expenditure
  - MHSA Closing Balance



[Download Complete Annual Revenue and Expenditure Report Dataset](#)  
Data last updated on: 3-29-18  
[Search All County Annual Revenue and Expenditure Reports](#)

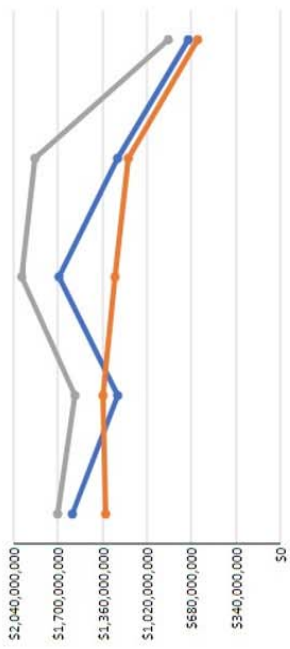
**Definitions**

- Annual Revenue and Expenditure Reports (RERs)
- Mental Health Plan (MHP)
- Fiscal Year (FY)
- Interest
- Data Available
- Data Not Available
- Revenue
- Expenditure
- Closing Balance
- Community Services and Supports (CSS)
- Prevention and Early Intervention (PEI)
- Innovation (INN)
- Other MHSA
- Calculations for MHSA Revenue, Expenditure and Closing Balance
- Prudent Reserve
- MHSA Combined Total
- 1991 Realignment (1991)
- Behavioral Health Subaccount (BHSA)
- Federal Financial Participation (FFP)
- Other Funds
- Closing Balance as a % of Revenue
- Closing Balance as Months of Revenue
- Fiscal Reversion

**MHSA Revenue, Expenditure, and Closing Balance Overview, Statewide, FY 2012-13 thru FY 2016-17**

The graph below displays the Total MHSA revenue, expenditure, and closing balances across multiple fiscal years.  
Select a tab to view by component or Total.

- Total
- CSS
- PEI
- INN
- Other MHSA



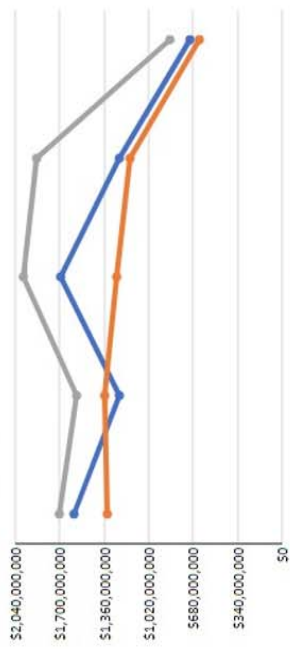
|                            | FY 12-13        | FY 13-14        | FY 14-15        | FY 15-16        | FY 16-17      |
|----------------------------|-----------------|-----------------|-----------------|-----------------|---------------|
| Total MHSA Revenue         | \$1,560,835,000 | \$1,239,968,000 | \$1,695,140,000 | \$1,248,131,000 | \$701,332,000 |
| Total MHSA Expenditure     | \$1,333,271,000 | \$1,361,300,000 | \$1,261,191,000 | \$1,163,761,000 | \$626,632,000 |
| Total MHSA Closing Balance | \$1,703,294,000 | \$1,567,446,000 | \$1,973,970,000 | \$1,879,464,000 | \$859,166,000 |
| %                          | 107.1%          | 126.4%          | 118.7%          | 150.6%          | 122.6%        |
| Months                     | 12.8            | 15.2            | 14              | 18.1            | 14.7          |
| # MHPs                     | 59              | 58              | 54              | 49              | 25            |

Total MHSA Revenue  
 Total MHSA Expenditure  
 Total MHSA Closing Balance  
 % Closing Balance as a % of Revenue  
 Months Closing Balance as Months of Revenue  
 # MHPs Count of MHP Reports Submitted

**Mental Health Funding Sources Revenue, Expenditure, and Closing Balance Overview, Statewide, FY 2012-13 thru FY 2016-17**

The graph below displays the MHSA revenue, expenditure, and closing balances across multiple fiscal years.  
Select a tab to view by funding source.

- MHSA
- 1991
- BHSA
- FFP
- Other Funds



|                      | FY 12-13        | FY 13-14        | FY 14-15        | FY 15-16        | FY 16-17      |
|----------------------|-----------------|-----------------|-----------------|-----------------|---------------|
| MHSA Revenue         | \$1,560,835,000 | \$1,239,968,000 | \$1,695,140,000 | \$1,248,131,000 | \$701,332,000 |
| MHSA Expenditure     | \$1,333,271,000 | \$1,361,300,000 | \$1,261,191,000 | \$1,163,761,000 | \$626,632,000 |
| MHSA Closing Balance | \$1,703,294,000 | \$1,567,446,000 | \$1,973,970,000 | \$1,879,464,000 | \$859,166,000 |
| %                    | 107.1%          | 126.4%          | 118.7%          | 150.6%          | 122.6%        |
| # MHPs               | 59              | 58              | 54              | 49              | 25            |

MHSA Revenue  
 MHSA Expenditure  
 MHSA Closing Balance  
 % Closing Balance as a % of Revenue  
 # MHPs Count of MHP Reports Submitted

**Total MHSA Reserves, Statewide, FY 2012-13-2016-17**

The graph below displays the MHSA Closing Balance, Prudent Reserve, and Combined Total Reserves across multiple fiscal years.  
The Combined Total Reserve equals the sum of the MHSA Closing Balance and Prudent Reserve.

